



8005 NW 80TH ST Miami, FL 33186 Phone 305-930-4625.

Miami March 18, 2025

The Hammocks Community Association.

Mrs. Paola Saettone.

We are pleased to introduce our company **QUICK CLEAN US**, an experienced provider of pumping services. We specialize in pumping solutions for a variety of industries and applications, including residential, commercial, municipal, and industrial.

We are confident that our pumping solutions are the best in the industry and are more reliable, cost-effective, and efficient than our competitors. Our team of knowledgeable and experienced technicians and support staff are committed to providing the highest quality service and products. Our company is scheduled to work 24/7 all year round in service of our customers.

We currently work with both residential and commercial property management companies and help them maintain Storm Drains and Grease Traps at their properties. Quick Clean us. provides necessary services and works collaboratively with property managers to ensure we contribute to the proper maintenance of these systems at very reasonable pricing levels. Our personnel are committed to maintaining the highest level of service and professionalism with each customer.

Our company has all the required permits to operate in Miami, including the waste liquid permit granted by DERM as well as current liability and work compensation insurance, ensuring any work done on the different properties of our clients.

We are confident our company will exceed your expectations and make your maintenance project successful. Please let us know if you would like to learn more about our services and solutions. We look forward to hearing from you soon.

If you have any questions, or need further assistance, please do not hesitate to contact us.

Respectfully submitted,


Miguel Cantuarias
Operations Manager
(786) 333 9752





8005 NW 80TH ST Miami, FL 33186 Phone 305-930-4625.

The Hammocks Community Association

Mrs. Paola Saettone

I am writing to you to present the formal quotation for the inspection and maintenance service of the drainage systems at The Hammocks Community Association. This document includes detailed information and findings collected during our recent reconnaissance visit.

Attached to the quotation, you will find a total of eight (8) annexes. These contain detailed data and represent a significant added value for the comprehensive understanding of the project and the proposal submitted. Below, I briefly outline the content of each one:

ANNEX TO "A" TYPES OF DRAINAGES SYSTEMS IN THE HAMMOCKS COMMUNITY.

ANNEX TO "B" GENERAL SITE MAP.

ANNEX TO "C" INDIVIDUAL PLANS BY COMMUNITIES / LOCATION DRAINS.

ANNEX TO "D" TABLE OF QUANTITY AND TYPE OF DRAINAGE BY COMMUNITY.

ANNEX TO "E" PROJECTED SCHEDULE FOR EXECUTION ON THE WORK

ANNEX TO "F" TECHNICAL AND ECONOMIC PROPORSAL

ANNEX TO "G" COMPLEMENTARY DOCUMENTATION

We trust that this documentation will be of great utility for the evaluation of our proposal and will enable the best decision to be made for the benefit of the residential area. We are at your complete disposal to clarify any doubts or provide further information as required.

I appreciate in advance your attention to this document and look forward to your comments and/or the confirmation of a meeting to discuss the next steps.



INTRODUCTION OF STORM DRAINAGE SYSTEMS

Catch Basins, wells, sumps, soakage pits, and exfiltration trenches receive storm water from rainstorms and allow it to percolate into the ground.

Constructing these drainage systems involves measuring the percolation rate of the ground where the system will be placed. The engineer must then take into account the elevation of the property, total square feet to be drained, size or type of storm to be drained and total area constructed. With that information in hand, the engineer can properly design the drainage system.

These systems are typically gravity based, and all drainage is performed on-site.

Routine maintenance of these systems allows them to work at peak performance and can aid in extending their useful life. The useful life of a system is 25-30 years.



ANNEXES

ANNEX TO "A" TYPES OF DRAINAGES SYSTEMS IN THE HAMMOCKS COMMUNITIES

ANNEX TO "B" GENERAL SITE MAP.

ANNEX TO "C" INDIVIDUAL PLANS BY COMMUNITIES / LOCATION DRAINS.

ANNEX TO "D" TABLE OF QUANTITY AND TYPE OF DRAINAGE BY COMMUNITY.

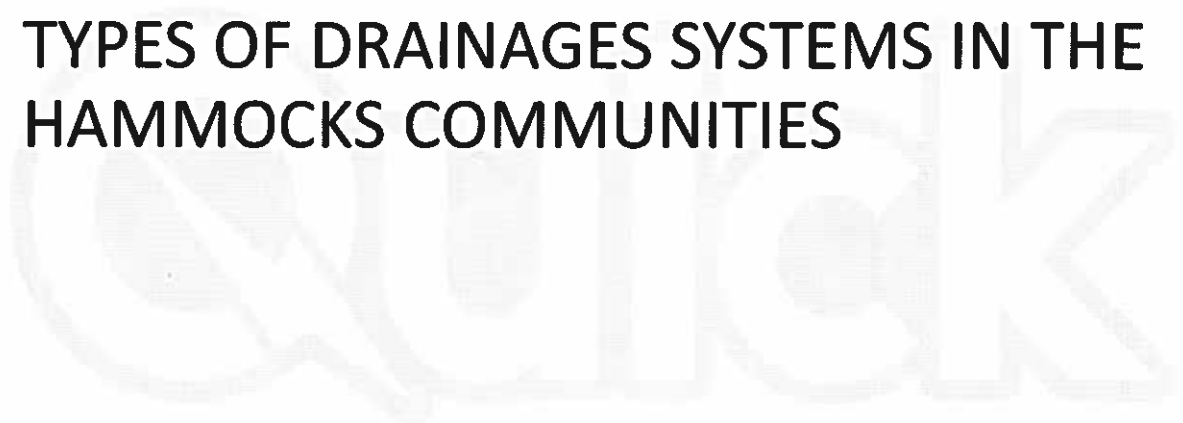
ANNEX TO "E" PROJECTED SCHEDULE FOR EXECUTION ON THE WORK.

ANNEX TO "F" OBSERVATIONS ON THE CONDITION OR LOCATION



A

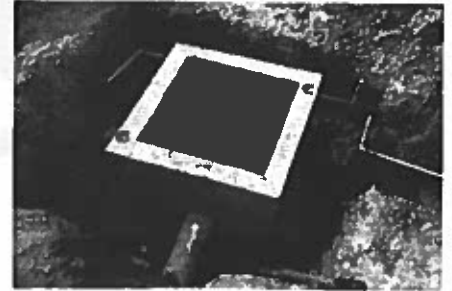
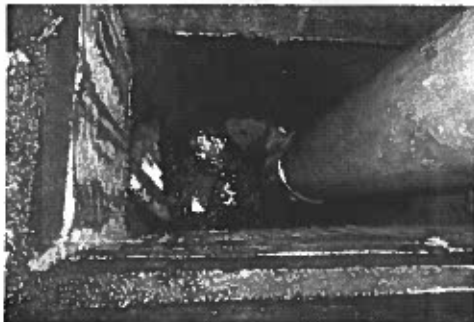
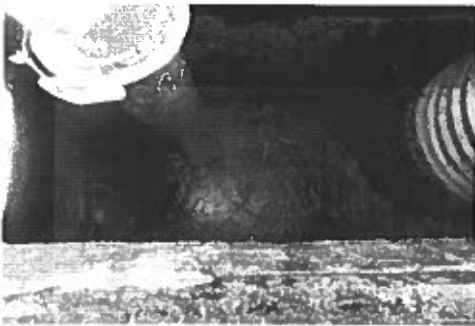
TYPES OF DRAINAGES SYSTEMS IN THE HAMMOCKS COMMUNITIES





TYPES OF DRAINAGE SYSTEMS IN THE HAMMOCKS COMMUNITIES

CATCH BASIN



SOAKAGE PITS

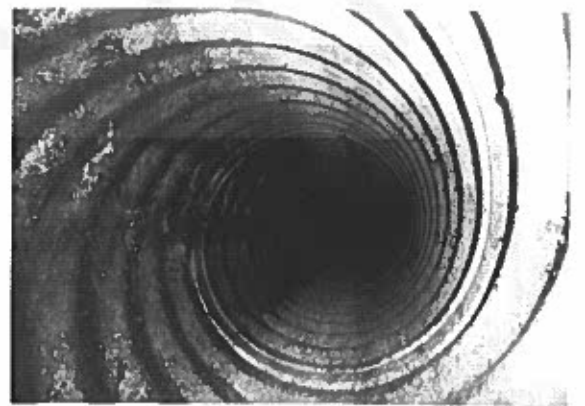
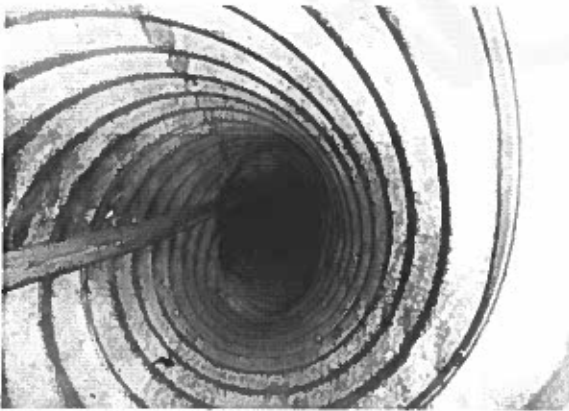




WELL



STORM PIPE RESTING IN EXFILTRATION TRENCH





RETENTION SQUARE BOX



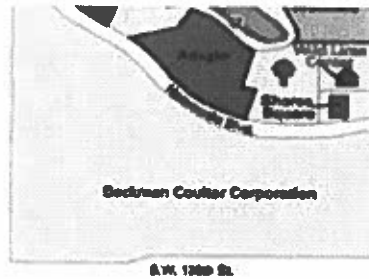


B

GENERAL SITE MAP



Quick





C

INDIVIDUAL PLANS BY
COMMUNITIES

LOCATION DRAINS

CODES



CATCH BASIN



SOAKAGE PIT

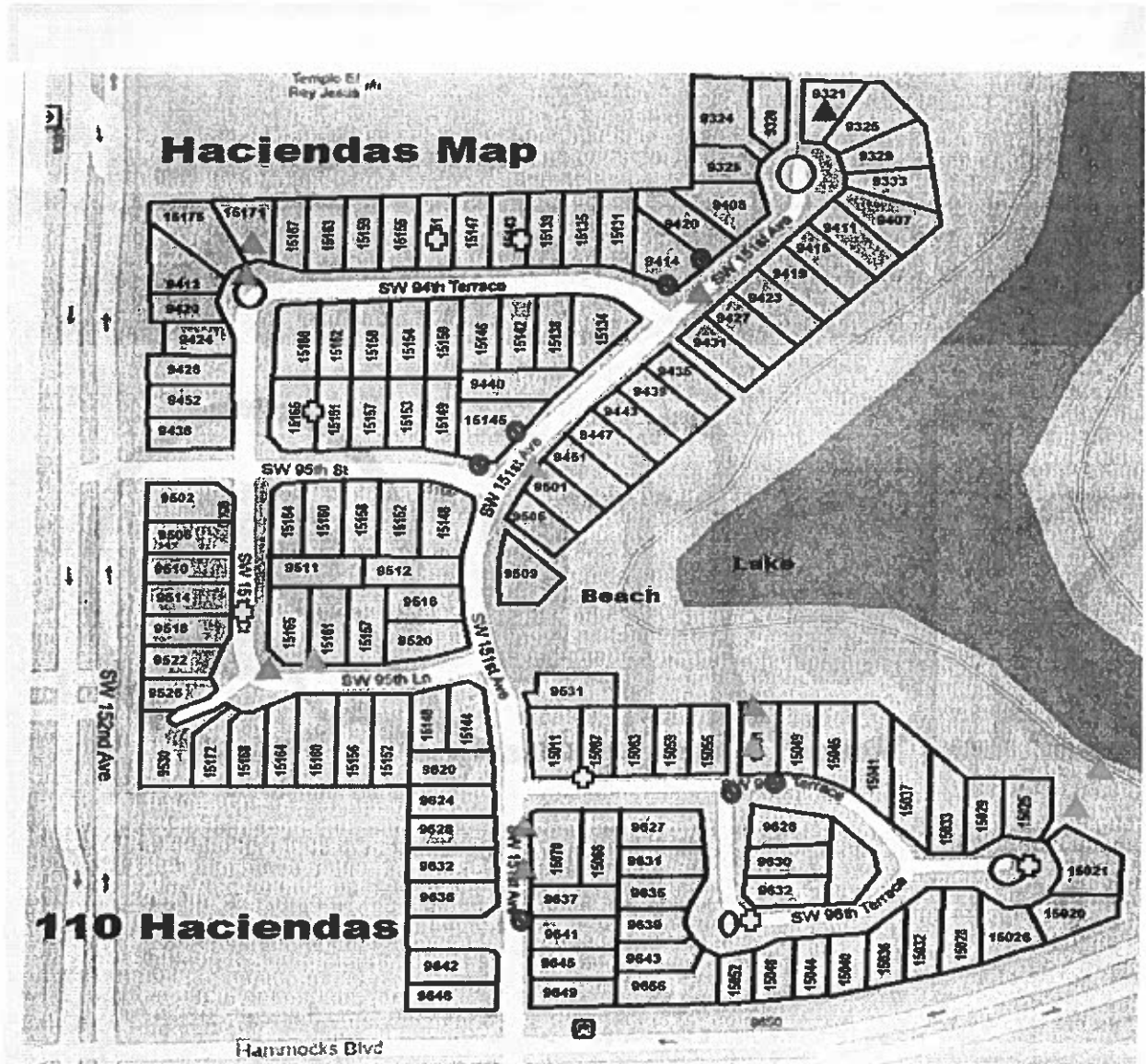


WELL

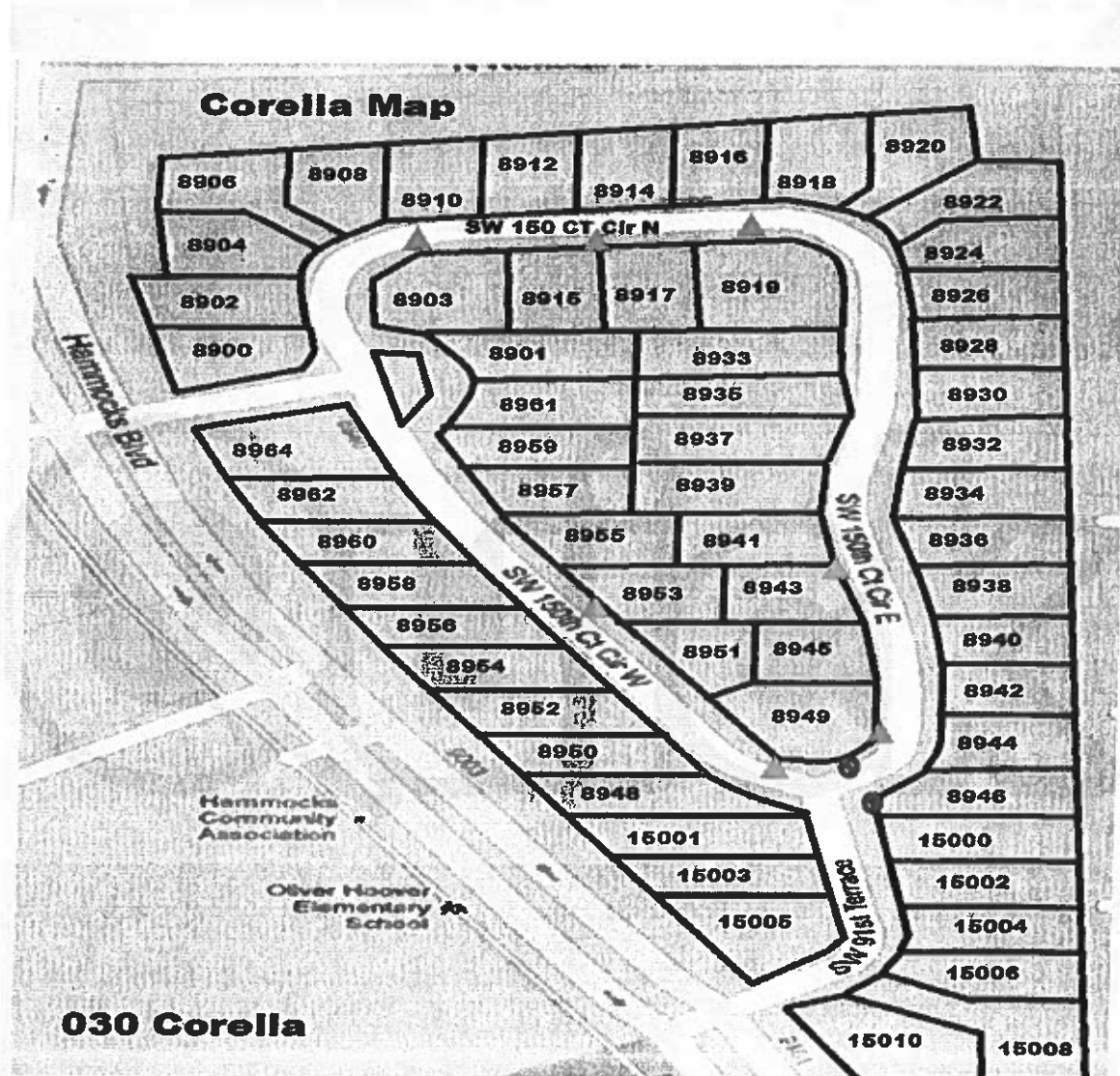





SQUARE BOX

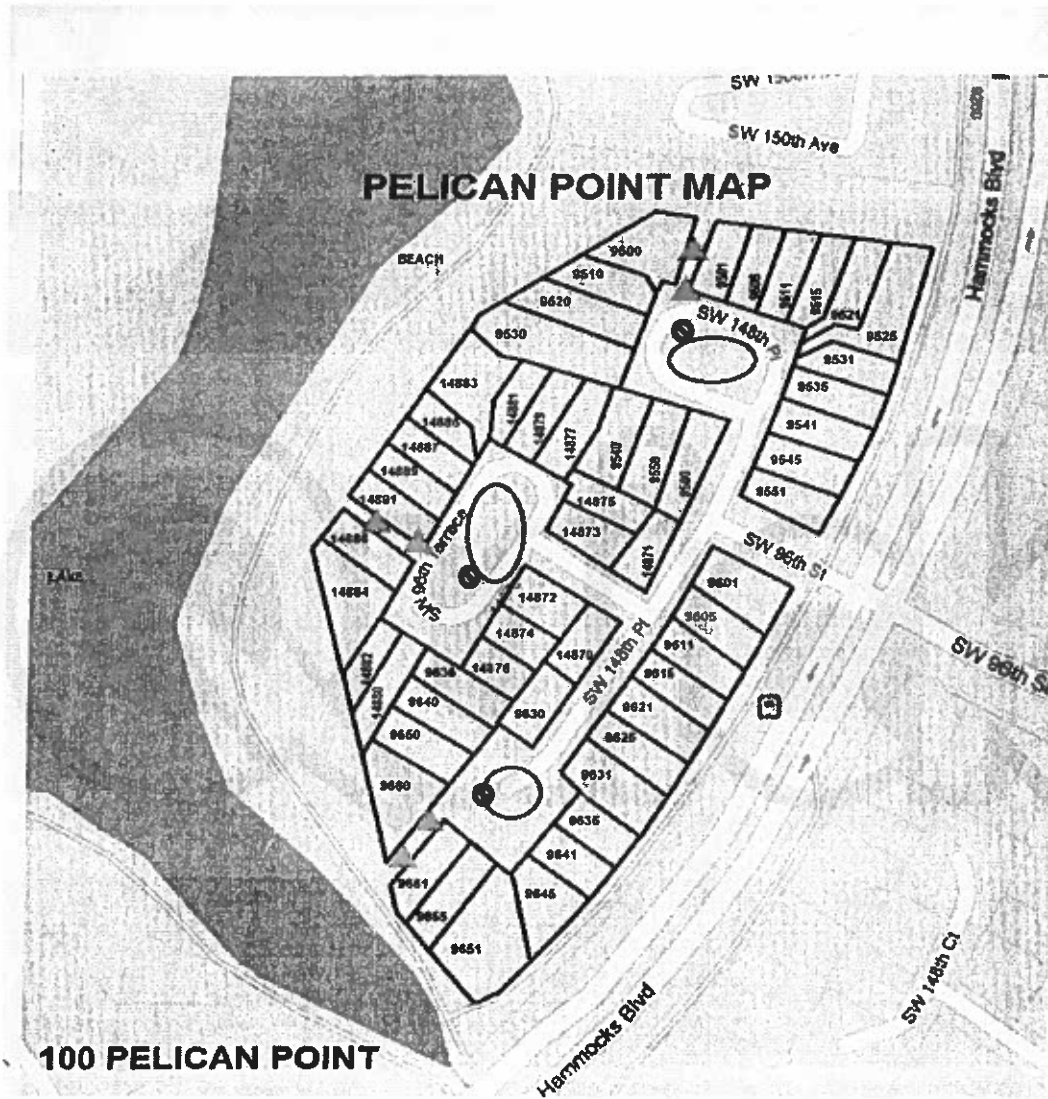




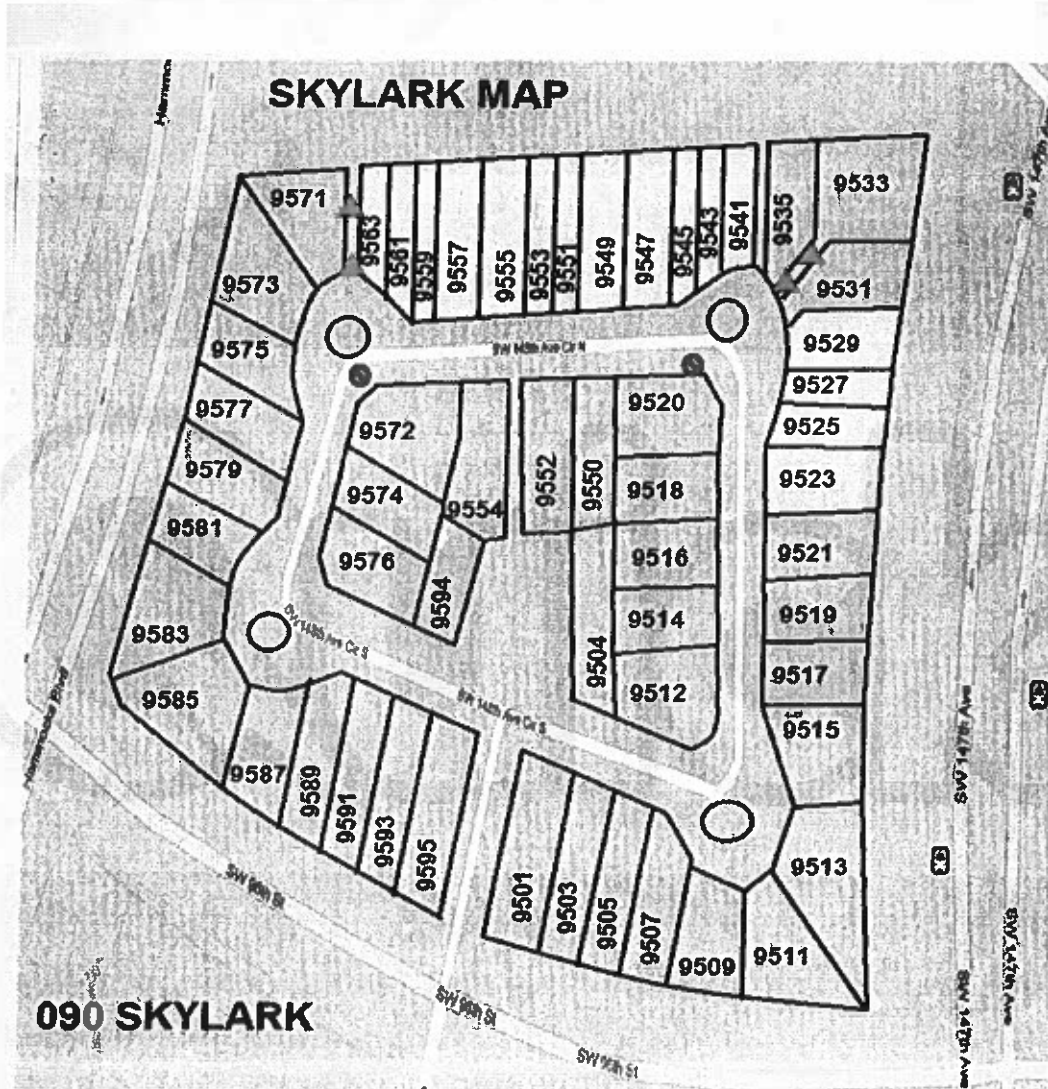
	CATCH BASIN	07
	SOAKAGE PITS	13
	WELLS	07
TOTAL		27 DRAINAGES






	CATCH BASIN	02
	SOAKAGE PITS	07
	WELLS	00
TOTAL		09 DRAINAGES






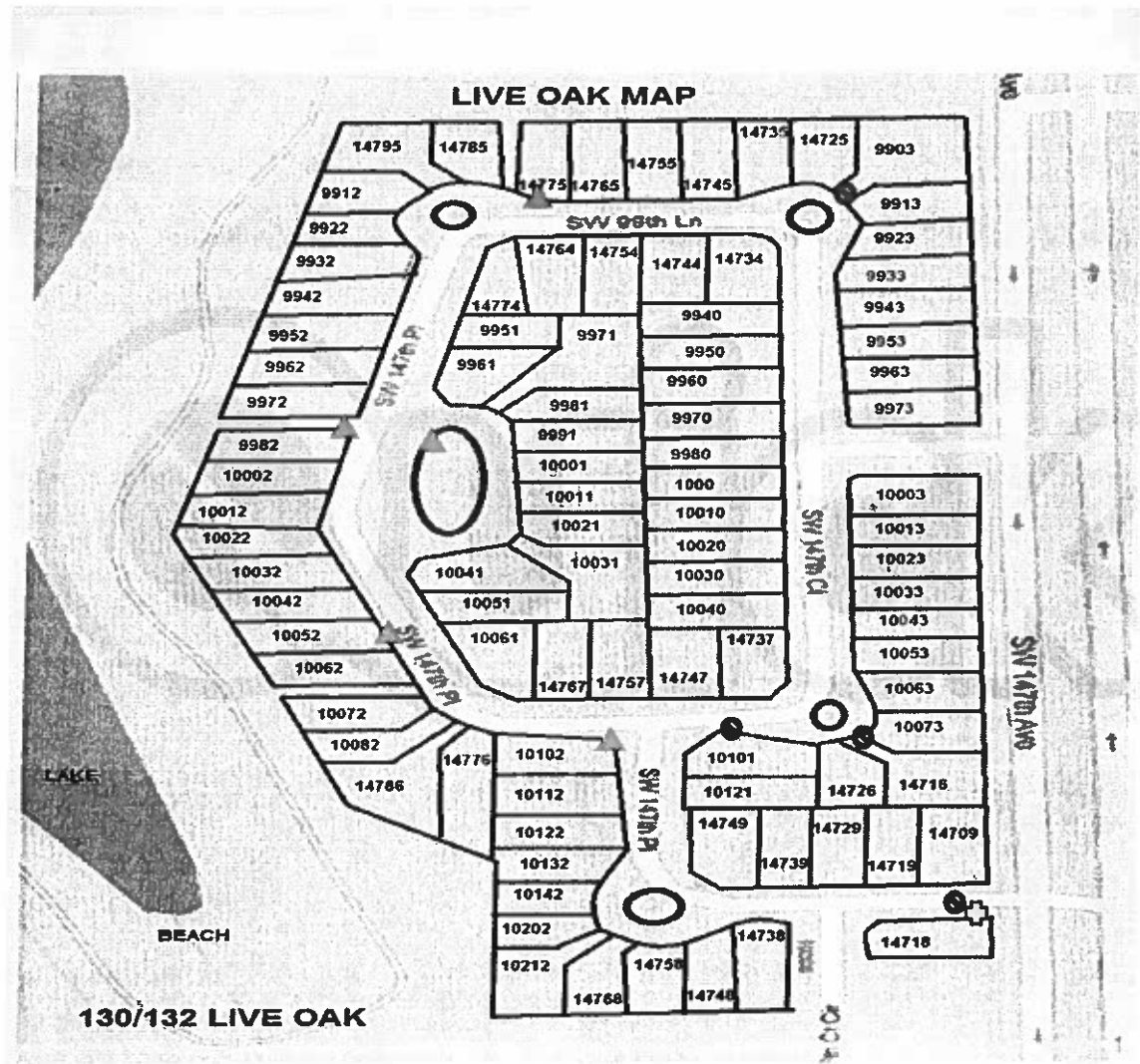
	CATCH BASIN	03
	SOAKAGE PITS	06
	WELLS	00
TOTAL		09 DRAINAGES



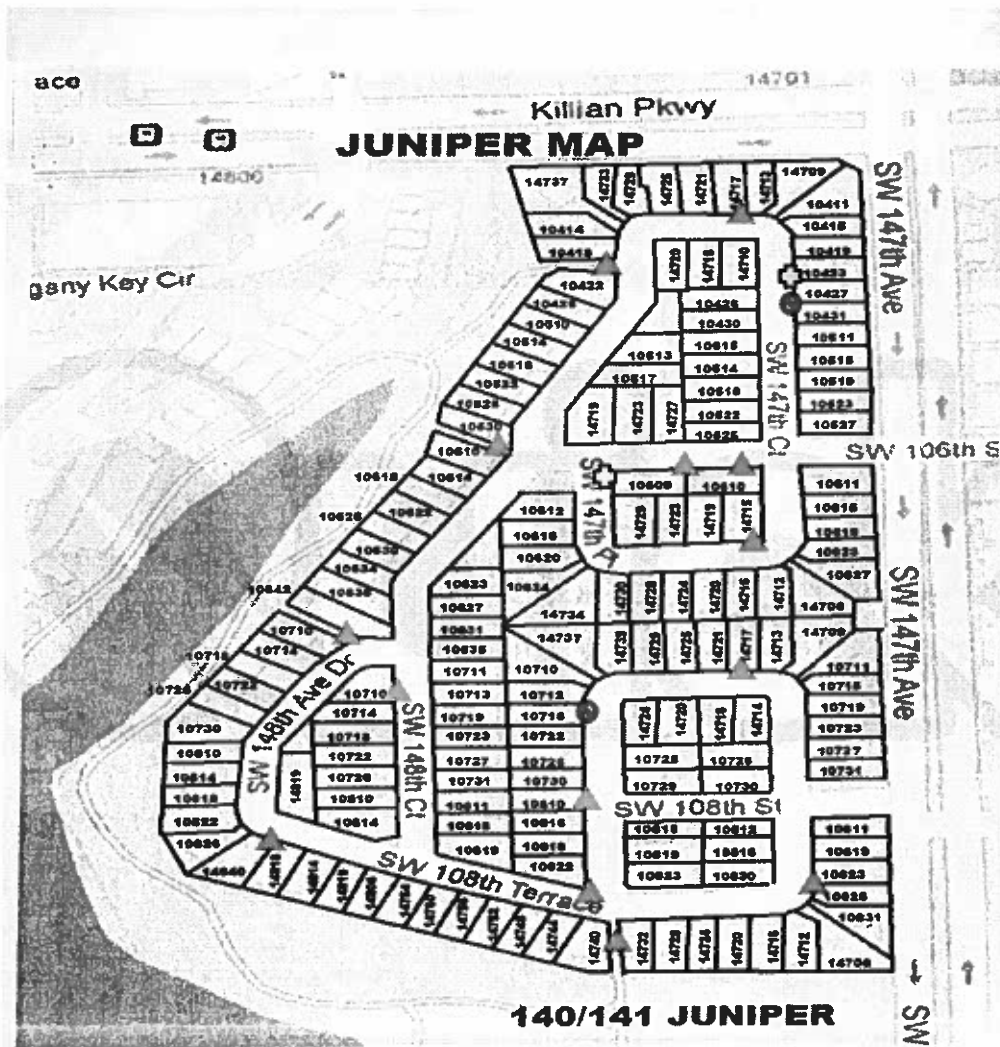
	CATCH BASIN	02
	SOAKAGE PITS	04
	WELLS	00
TOTAL		06 DRAINAGES



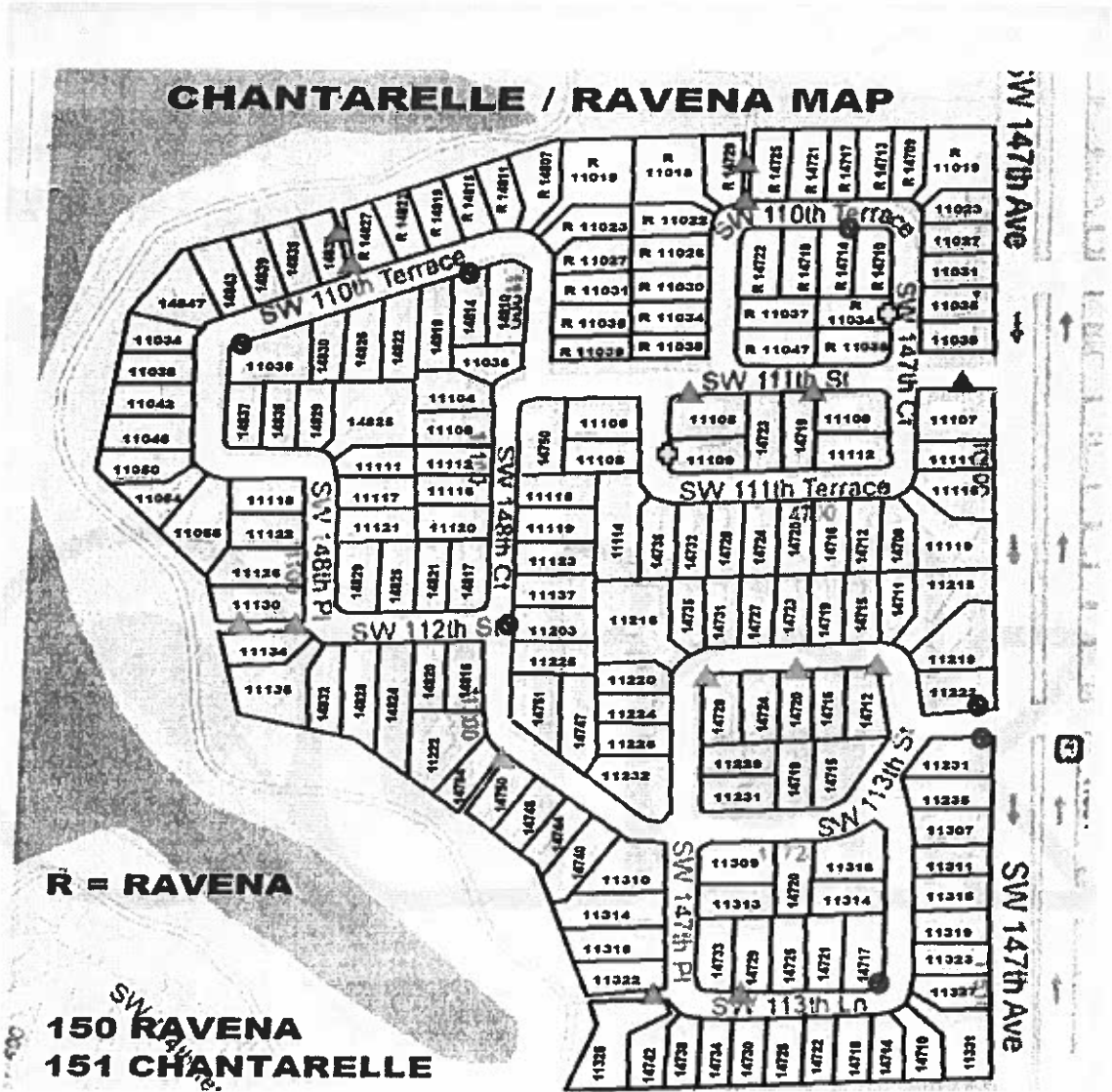
	CATCH BASIN	08
	SOAKAGE PITS	20
	WELLS	01
TOTAL		29 DRAINAGES






	CATCH BASIN	04
	SOAKAGE PITS	05
	WELLS	01
TOTAL		10 DRAINAGES



☉	CATCH BASIN	02
▲	SOAKAGE PITS	14
⊕	WELLS	02
TOTAL		18 DRAINAGES

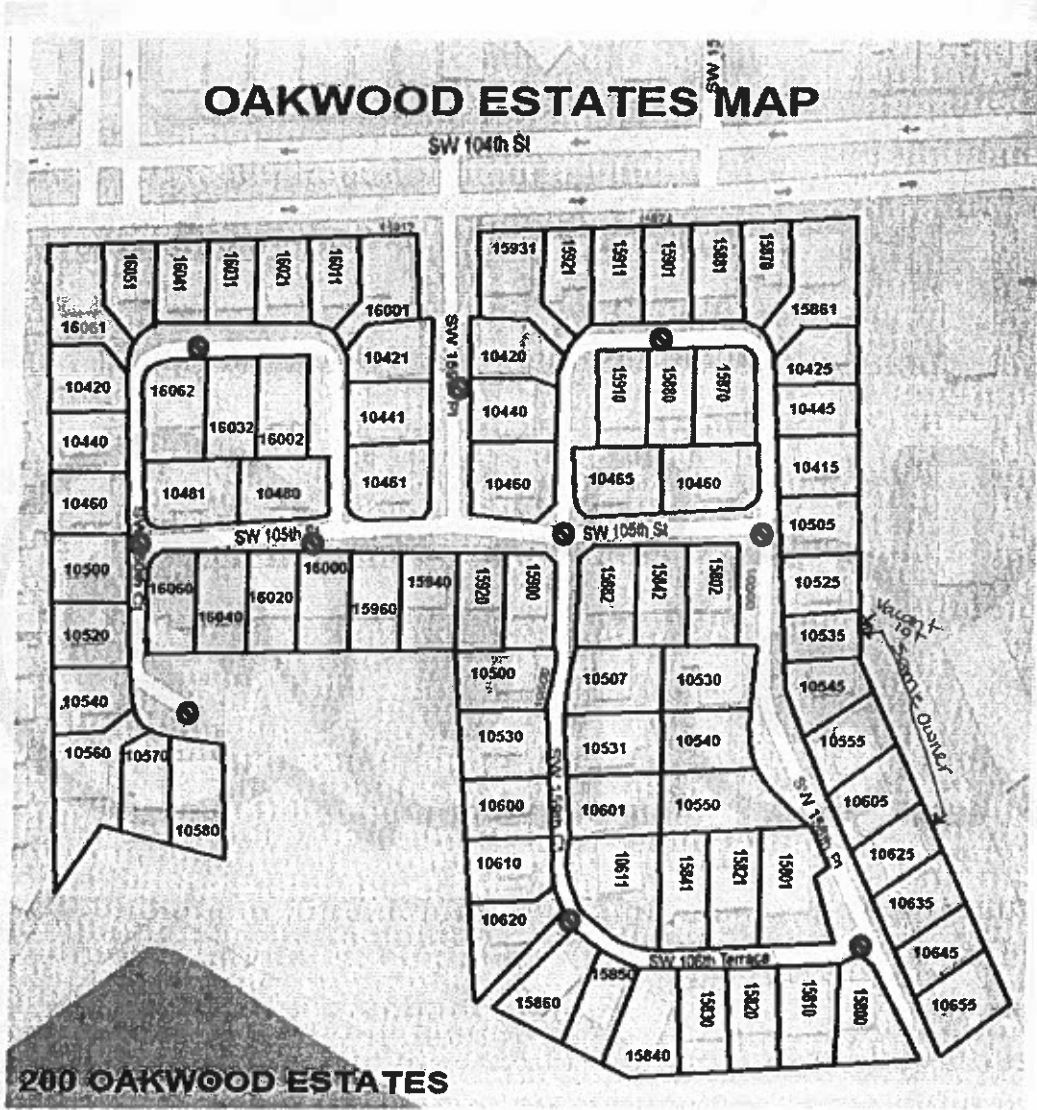


	CATCH BASIN	07
	SOAKAGE PITS	15
	WELLS	02
TOTAL 24 DRAINAGES		

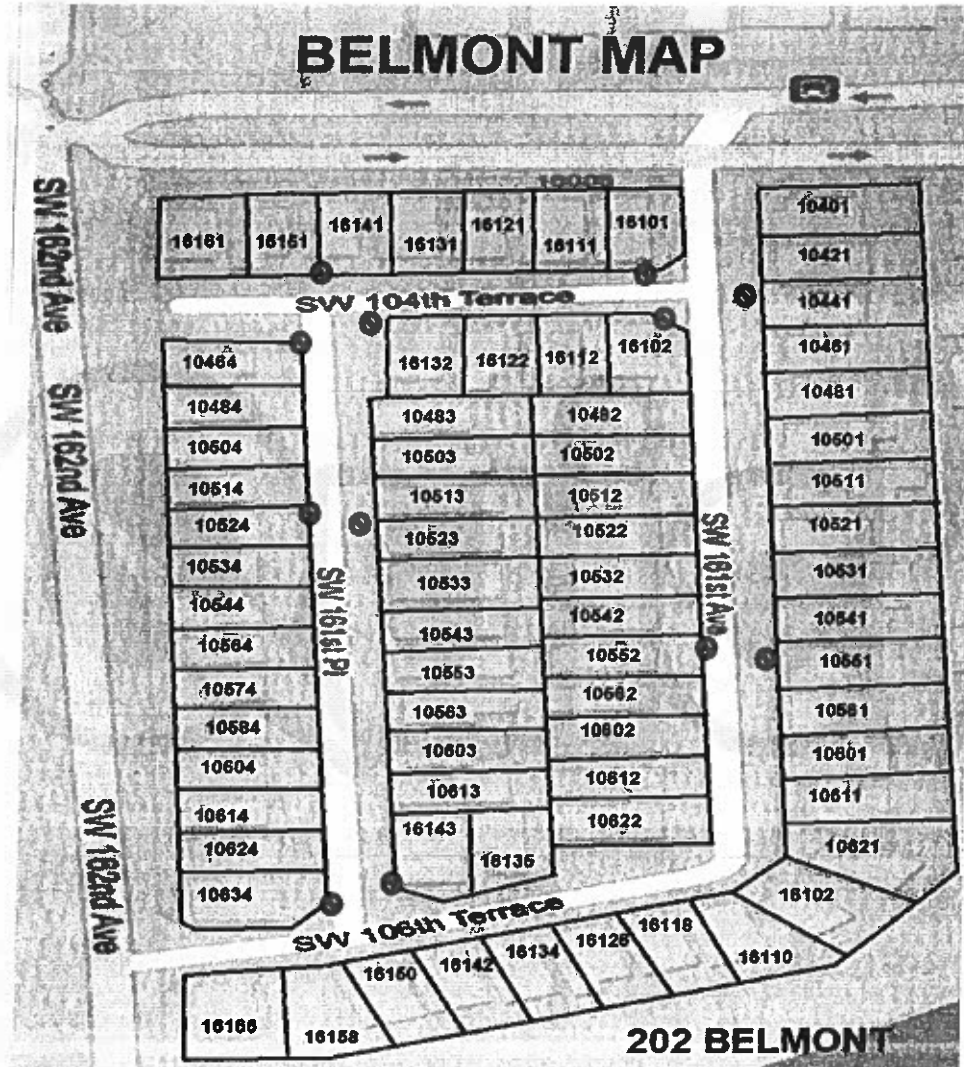


040 Lakeside

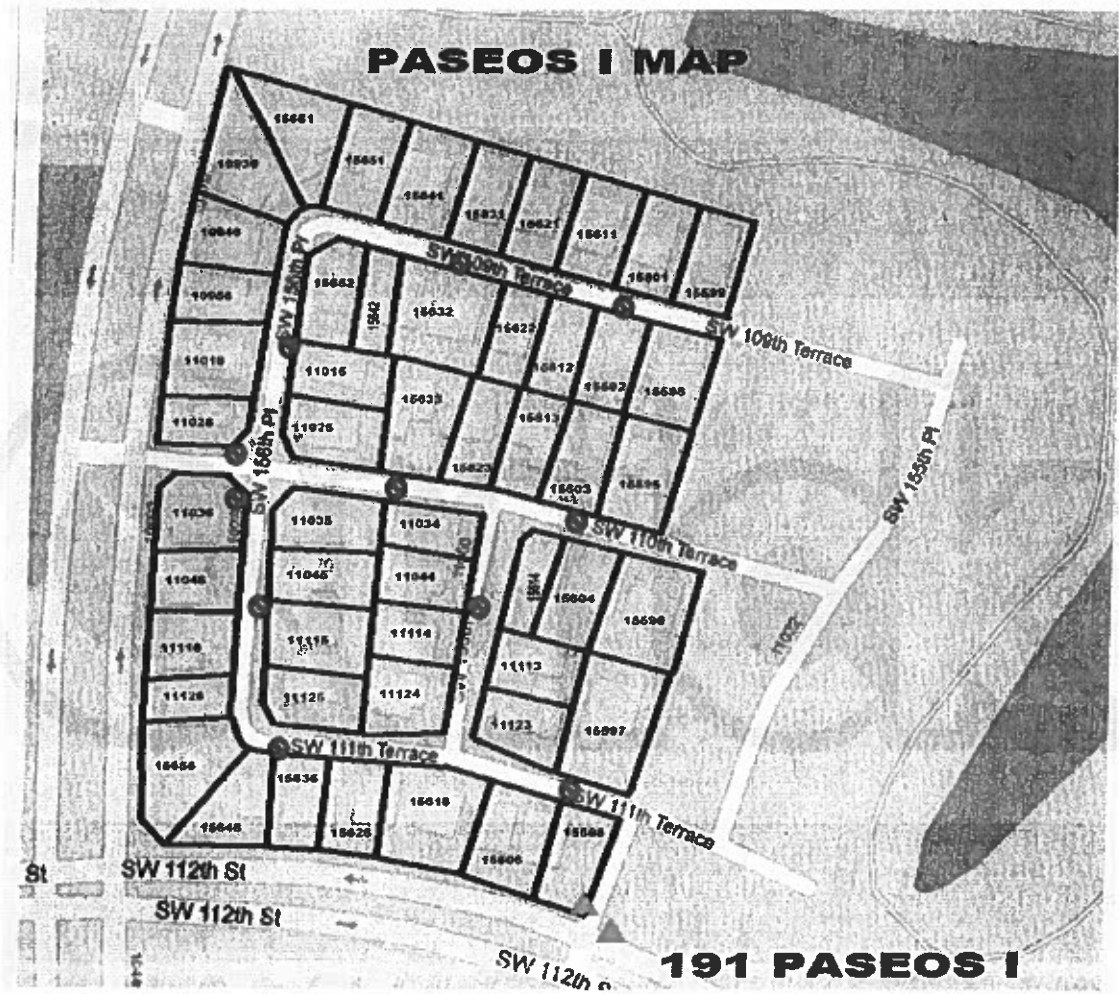
	CATCH BASIN	18
	SOAKAGE PITS	00
	WELLS	00
TOTAL		18 DRAINAGES






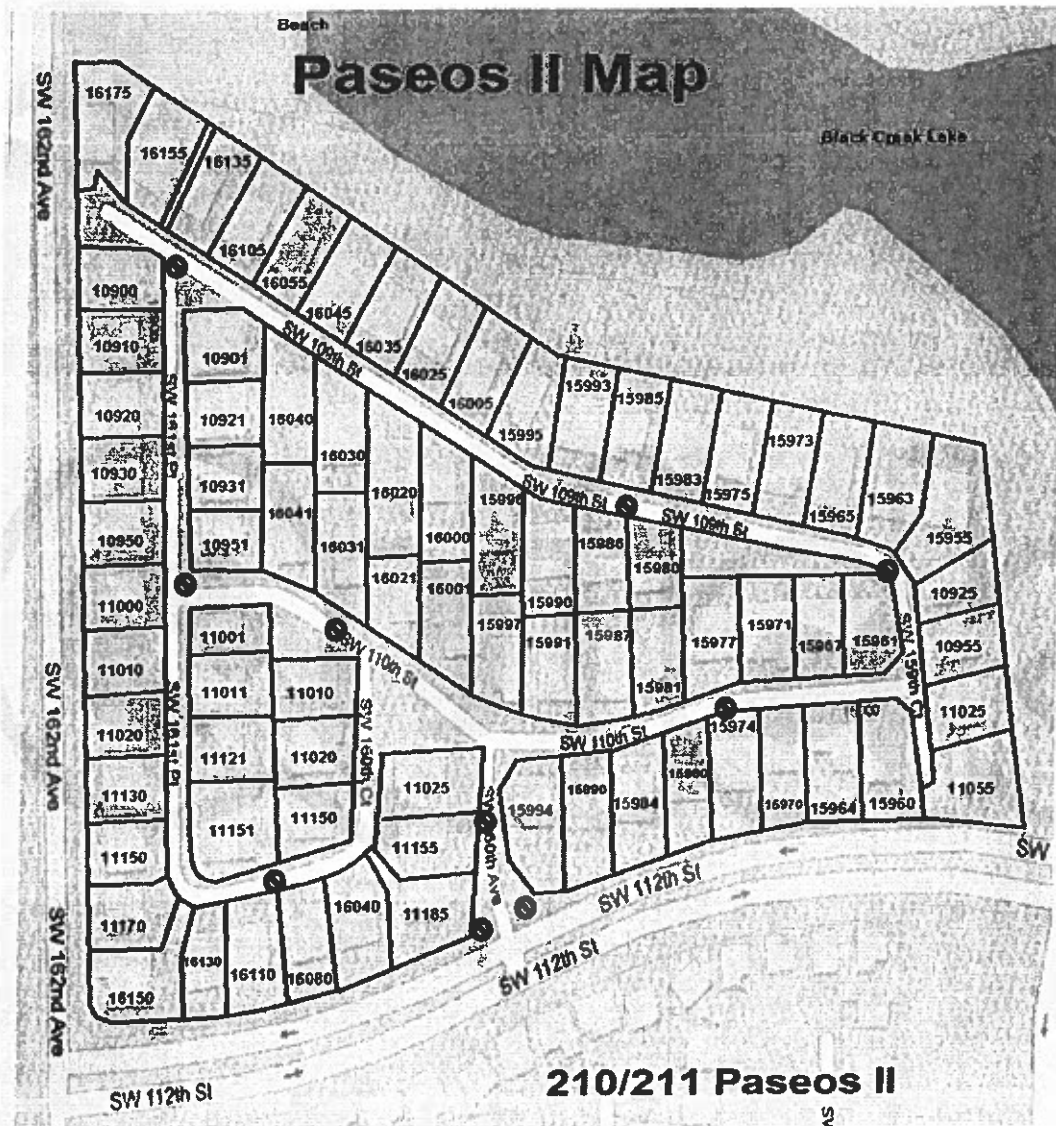
	CATCH BASIN	10
	SOAKAGE PITS	00
	WELLS	00
TOTAL 10 DRAINAGES		






	CATCH BASIN	12
	SOAKAGE PITS	00
	WELLS	00
TOTAL		12 DRAINAGES






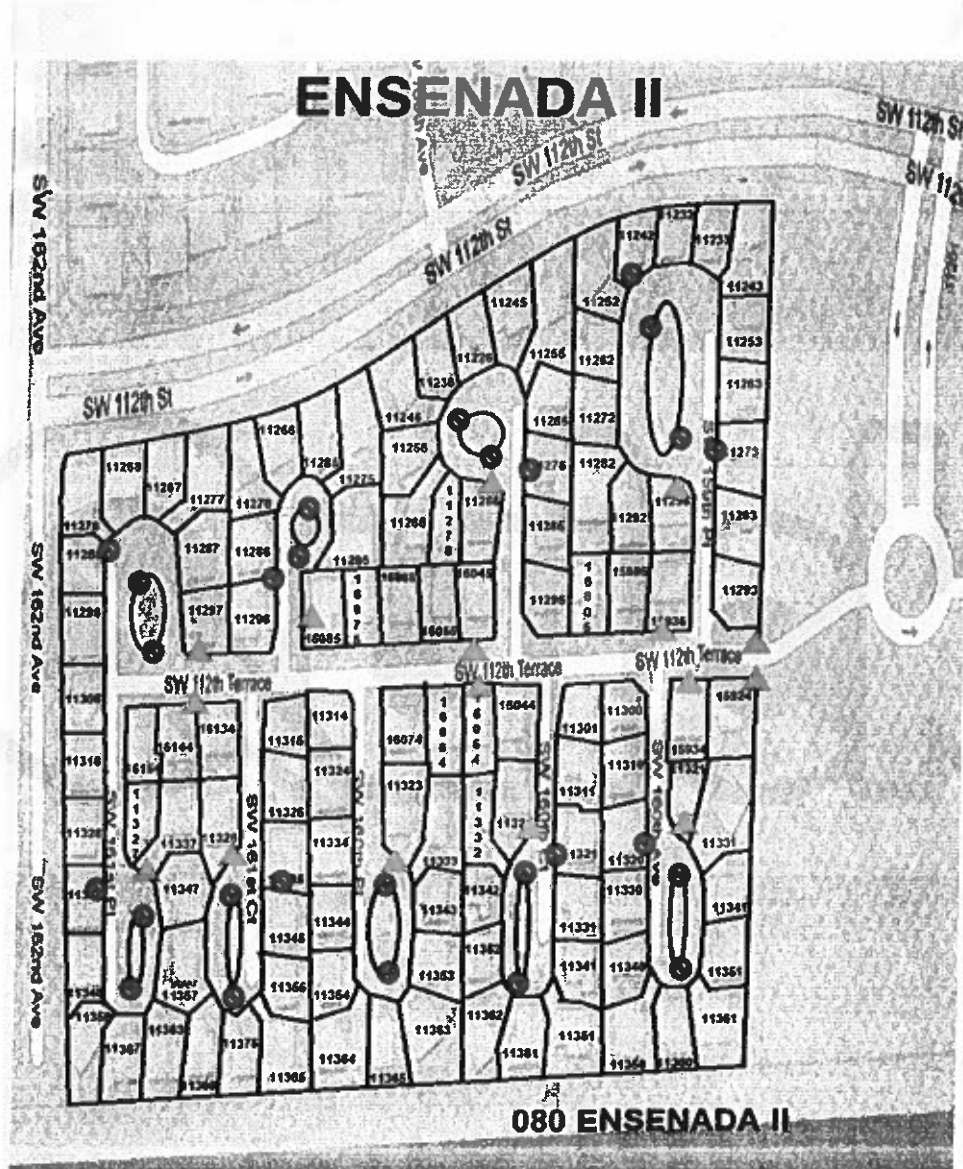
	CATCH BASIN	11
	SOAKAGE PITS	02
	WELLS	00
TOTAL		13 DRAINAGES






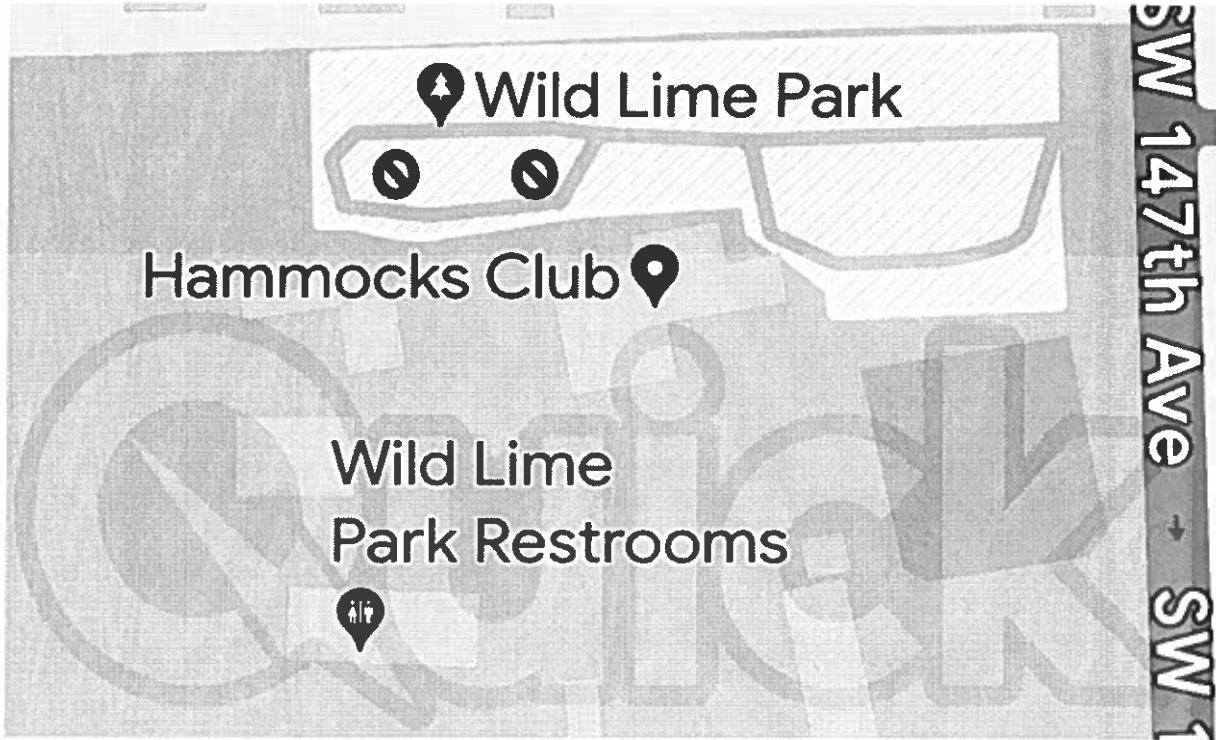
	CATCH BASIN	10
	SOAKAGE PITS	00
	WELLS	00
TOTAL		10 DRAINAGES



	CATCH BASIN	14
	SOAKAGE PITS	16
	WELLS	00
TOTAL		30 DRAINAGES






	CATCH BASIN	27
	SOAKAGE PITS	16
	WELLS	00
TOTAL 43 DRAINAGES		



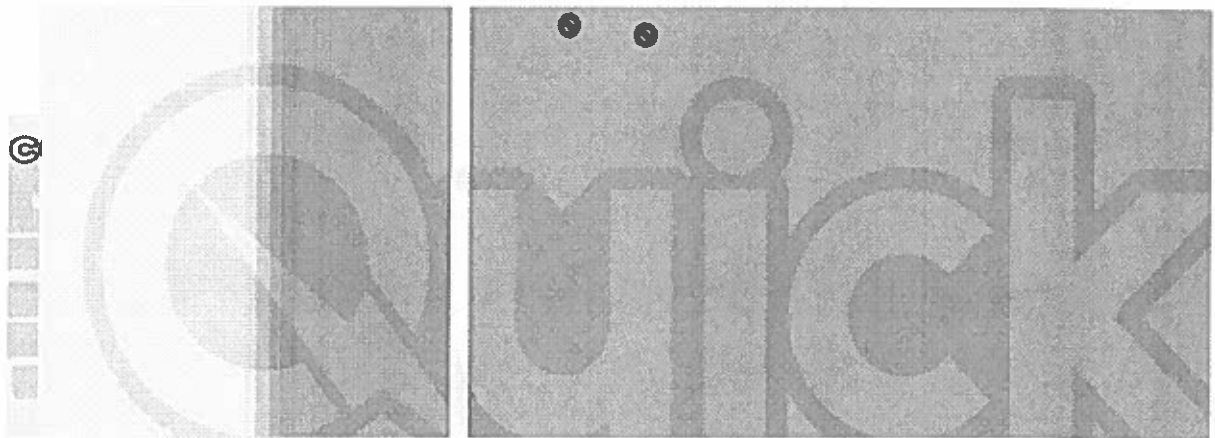
	CATCH BASIN	02
	SOAKAGE PITS	00
	WELLS	00
TOTAL		02 DRAINAGES



	CATCH BASIN	03
	SOAKAGE PITS	00
	WELLS	00
TOTAL		03 DRAINAGES



COMMON AREA ENSENADA I & II



	CATCH BASIN	04
	SOAKAGE PITS	00
	WELLS	00
TOTAL		04 DRAINAGES



D

TABLE OF QUANTITY AND TYPE OF DRAINAGE BY COMMUNITY



TABLE OF QUANTITY AND TYPE OF DRAINAGE BY COMMUNITY

NEIGHBORHOOD	CATCH BASIN	SOAKAGE PIT	SQUARE BOX	WELLS	DRAINAGES
OAKLAKE	4	8	0	4	16
HACIENDAS	7	13	0	7	27
SPICEWOOD	0	3	2	0	5
CORELLA	2	7	0	0	9
PELICAN POINT	3	6	0	0	9
SKYLARK	2	4	0	0	6
CEDAR LANDING	8	20	0	1	29
LIVE OAK	4	5	0	1	10
JUNIPER	2	14	0	2	18
CANTARELLE/RAVENA	7	15	0	2	24
LAKESIDE	18	0	0	0	18
OAKWOOD	10	0	0	0	10
BELMONT	12	0	0	0	12
PASEO I	11	2	0	0	13
PASEO II	10	0	0	0	10
ENSENADA I	14	16	0	0	30
ENSENADA II	27	16	0	0	43
SUNFLOWER	11	0	0	0	11
WILD LIME CENTER	2	0	0	0	2
BLACK CREEK CENTER	3	0	0	0	3
WATER OAKS CENTER	0	0	0	0	0
COMMON ENSENADA I & II	4	0	0	0	4
	161	129	2	17	309



E

PROJECTED SCHEDULE FOR THE EXECUTION OF THE WORK



PROJECTED SCHEDULE FOR THE EXECUTION OF THE WORK

NEIGHBORHOOD	QTY \ DAYS	1	2	3	4	5	6	7	8	9	10	11	DATE
WATER OAKS CENTER	0												
WILD LIME CENTER	2												
BLACK CREEK CENTER	3												
COMMON ENSENADA I & II	4												
SPICEWOOD	5												
SKYLARK	6												
CORELLA	9												
PELICAN POINT	9	38											
OAKWOOD	10												
PASEO II	10												
SUNFLOWER	11		38	3									
BELMONT	12												
PASEO I	13												
OAKLAKE	16			38	6								
JUNIPER	18												
LAKESIDE	18				38	4							
CANTARELLE/RAVENA	24												
HACIENDAS	27					38	17						
CEDAR LANDING	29						38	8					
ENSENADA I	30							38					
ENSENADA II	43								43				
FINAL INSPECTION	309											X	
UNFORESEEN EVENT										X	X		



F

TECHNICAL AND ECONOMIC PROPORSAL



8005 NW 80TH STE# 01 ST MIAMI, FL 33166 Phone (305) 930- 4625

Miami March 18, 2025

THE HAMMOCKS COMMUNITY ASSOCIATION

9020 Hammocks Blvd

Miami FL 33172

Atte.Mr. Paola Saettone

Storm Drains Cleaning 161 Catch Basin 129 Soakage Pits 02 Square Box 17 wells, making a total of 309 Drainages

Scope of Work:

The following is included in a regular cleaning:

Vacuum pump truck to remove debris from each drain and pit.

Pressure jet cleans drains pit walls and bottom. Jets clean all laterals.

Clean area from all debris.

In the event of encountering any drainage with a type of problem, such as roots, construction materials inside the drainage, line blockages, or limited access, our team will execute the best possible solution.

We offer you a service carried out with efficiency and safety. Upon completion of the work, a report will be prepared, in which we will inform you of any novelties found during its execution, suggesting alternatives and recommendations based on our findings. Placing it at your consideration for your respective evaluation.

We work 24/7 and we are attentive to any emergency or service you may require.



Should there be a need for services beyond the standard scope, such as the use of camera equipment, internal sewer jets, root cutting, removing construction material, or clearing blocked lines, we will proceed to coordinate with the designated contact person. In such instances, we will present an additional economic proposal if necessary.

We offer as part of our services to carry out camera inspections on drainage systems presenting problems, with the aim of finding the best possible solution.

In case roots are found inside the lines, we have cutting equipment to remove them.

All work is guaranteed for a period of one year from the date of completion. Weather conditions should be taken into consideration. The work will be carried out and professionally finished for the sum of:

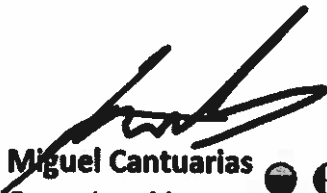
Cost per Drainage: \$100.00 Each /Total cost for (309) Drainages \$	30,900.00
Total cost of job for all drains:	Total: \$ 30,900 .00

Payment to be made at Terms: COD

Payable at QUICK CLEAN US LLC

Any alteration or deviation from the above specifications involving extra costs will be executed only upon written order and will become an extra charge over and above the estimate. All agreements contingent upon strikes, accidents, or delays beyond our control.

Sincerely submitted,



Miguel Cantuarias
Operations Manager
(786) 333 9752





ACCEPTANCE OF PROPOSAL


The above prices, specifications and conditions are satisfactory and are hereby accepted.

You are authorized to do the work as specified. Payments will be made as outlined above.

Signature: 

April 10, 2025

Date: _____

 - Court-Appointed Monitor April 10, 2025
By: Eric R. Thompson, Partner

Note: Proposal may be withdrawn by us if not accepted within 30 days



G

COMPLEMENTARY DOCUMENTATION



OUR CLIENTES

STORM DRAINS 2023

CUSTOMER	COMPANY
LAKE SIDE COUNTRY WALK	COUNTRY WALK HOMEOWNER ASSOCIATION
HICKORY LANE COUNTRY WALK	COUNTRY WALK HOMEOWNER ASSOCIATION
STATE LIVE OAK COUNTRY WALK	COUNTRY WALK HOMEOWNER ASSOCIATION
STONEY BROOKS COUNTRY WALK	COUNTRY WALK HOMEOWNER ASSOCIATION
THE SHORES KEY GATES	COUNTRY WALK HOMEOWNER ASSOCIATION
GREENWICH EAST PATIO HOME	COUNTRY WALK HOMEOWNER ASSOCIATION
WILLOW BLEND PATIO HOME	COUNTRY WALK HOMEOWNER ASSOCIATION
ROOSTER RIDGE COUNTRY WALK	COUNTRY WALK HOMEOWNER ASSOCIATION
SUMMER TREE PATIO HOMES	COUNTRY WALK HOMEOWNER ASSOCIATION
GREENWICH WEST PATIO COUNTRY WALK	COUNTRY WALK HOMEOWNER ASSOCIATION
KEY COLONY	DORAL MANAGEMENT
DORAL COMMON 02	DORAL MANAGEMENT
DORAL COMMON 03	DORAL MANAGEMENT
DORAL ESTATES	DORAL MANAGEMENT
SONOMA	DORAL MANAGEMENT
SABAL CHASE	FIRST RESIDENTIAL
LEON MEDICAL CENTER	LEON MEDICAL CENTER
LIQUID ENVIRONMENTAL	LIQUID ENVIROMENTAL
KEY LANDING KEY GATES	MIAMI MANAGEMENT INC
CALI GREEN KEY GATES	MIAMI MANAGEMENT INC
MASTER FAIRWAYS KEY GATES	MIAMI MANAGEMENT INC
FAIRWAYS KEY GATES	MIAMI MANAGEMENT INC
AUGUSTA KEY GATES	MIAMI MANAGEMENT INC
TOWNGATES KEY GATES	MIAMI MANAGEMENT INC
NORTH GATES KEY GATES	MIAMI MANAGEMENT INC
CENTER GATES KEY GATES	MIAMI MANAGEMENT INC
ARBOR PARKS KEY GATES	MIAMI MANAGEMENT INC
EAST LAKES KEY GATES	MIAMI MANAGEMENT INC
PALM ISLE KEY GATE	MIAMI MANAGEMENT INC
KENDALL VILLAGE	MIAMI MANAGEMENT INC
THE SQUARE CENTER KEY BISCAYNE	MICHELE & ASSOCIATES



Cleaning and organizing your world

GRAND BAY & ESTATES	MICHELE & ASSOCIATES
100 SUNRISE	MICHELE & ASSOCIATES
GRAPETREE DRIVE	MICHELE & ASSOCIATES
HERMITAGE	MICHELE & ASSOCIATES
MANGO HILL# 10	OWNERS
THE CHURCH OF GOD OF PROPHECY	OWNERS
EAST WAY HARBOUR	OWNERS

CONSTRUCTION COMPANYS 2023

CUSTOMER	OCCUPATION
ALL WEBB ENTERPRISE INC	WELL DRILLING CONTRACTOR
MASTER EXCAVATOR	EXCAVATING CONTRACTOR
BORKAT PLUMBING SERVICES	PLUMBER
MAINGUY LANDSCAPE SERVICES	LANDSCAPER
748 DEVELOPMENT LLC	CONTRACTOR
INTEMATION DEPOT	CONTRACTOR
DEVOLVE CORP	CONTRACTOR
UNIVERSAL ENGINNERING SCIENCES	ENGINEERING CONSULTANT
TRINITY BROADCASTER TO FLORIDA	CONTRACTOR